

Part Number: KM2520EC01

High Efficiency Red

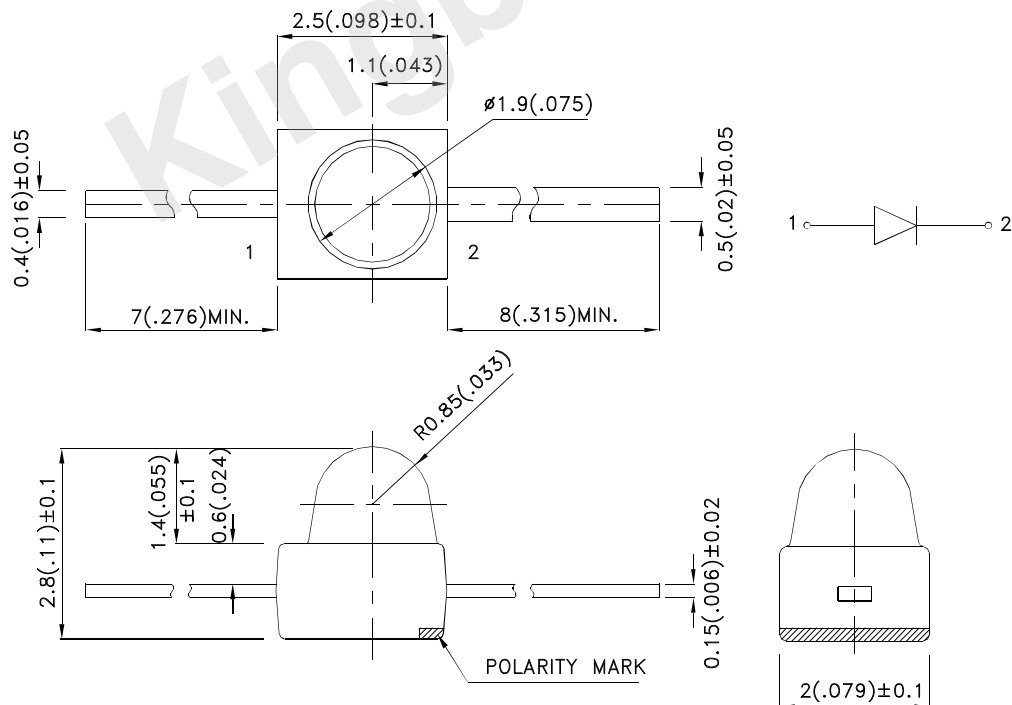
Features

- Subminiature package.
- Long life solid state reliability.
- Low package profile.
- Moisture sensitivity level : level 3.
- RoHS compliant.

Description

The High Efficiency Red source color devices are made with Gallium Arsenide Phosphide on Gallium Phosphide Orange Light Emitting Diode.

Package Dimensions



Notes:

1. All dimensions are in millimeters (inches).
2. Tolerance is ±0.25(0.01") unless otherwise noted.
3. Lead spacing is measured where the leads emerge from the package.
4. The specifications, characteristics and technical data described in the datasheet are subject to change without prior notice.



Selection Guide

| Part No. | Dice | Lens Type | Iv (mcd) [2] @ 20mA | | Viewing Angle [1] |
|------------|---------------------------------|-------------|------------------------|------|----------------------|
| | | | Min. | Typ. | 2θ1/2 |
| KM2520EC01 | High Efficiency Red (GaAsP/GaP) | Water Clear | 50 | 100 | 20° |
| | | | *20 | *50 | |

Notes:

1. θ1/2 is the angle from optical centerline where the luminous intensity is 1/2 of the optical peak value.
2. Luminous intensity/ luminous Flux: +/-15%.
3. Luminous intensity value is traceable to the CIE127-2007 compliant national standards.

Electrical / Optical Characteristics at TA=25°C

| Symbol | Parameter | Device | Typ. | Max. | Units | Test Conditions |
|--------|--------------------------|---------------------|------|------|-------|-----------------|
| λpeak | Peak Wavelength | High Efficiency Red | 627 | | nm | IF=20mA |
| λD [1] | Dominant Wavelength | High Efficiency Red | 617 | | nm | IF=20mA |
| Δλ1/2 | Spectral Line Half-width | High Efficiency Red | 45 | | nm | IF=20mA |
| C | Capacitance | High Efficiency Red | 15 | | pF | VF=0V;f=1MHz |
| VF [2] | Forward Voltage | High Efficiency Red | 2 | 2.5 | V | IF=20mA |
| IR | Reverse Current | High Efficiency Red | | 10 | uA | VR = 5V |

Notes:

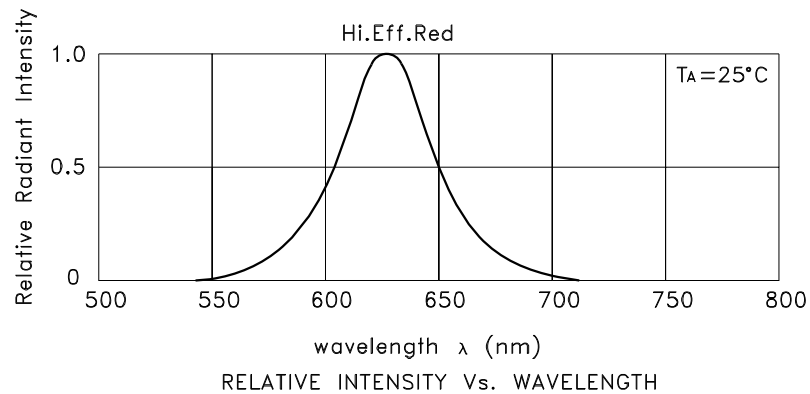
1. Wavelength: +/-1nm.
2. Forward Voltage: +/-0.1V.
3. Wavelength value is traceable to the CIE127-2007 compliant national standards.

Absolute Maximum Ratings at TA=25°C

| Parameter | High Efficiency Red | Units |
|-------------------------------|---------------------|-------|
| Power dissipation | 75 | mW |
| DC Forward Current | 30 | mA |
| Peak Forward Current [1] | 160 | mA |
| Reverse Voltage | 5 | V |
| Operating/Storage Temperature | -40°C To +85°C | |
| Lead Solder Temperature [2] | 260°C For 3 Seconds | |
| Lead Solder Temperature [3] | 260°C For 5 Seconds | |

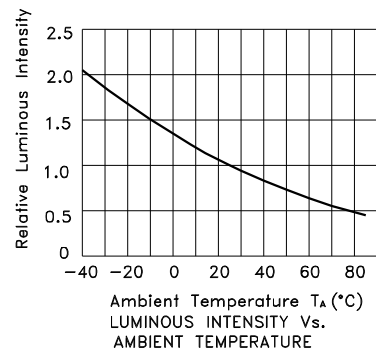
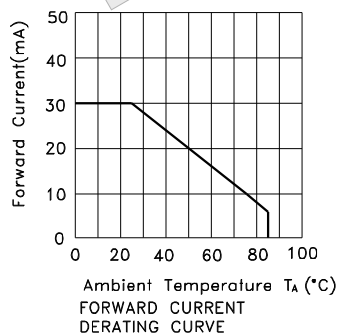
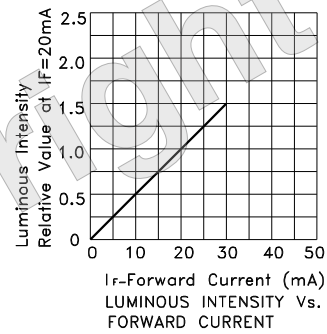
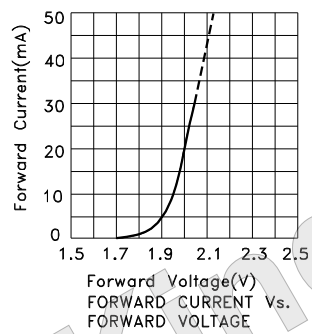
Notes:

1. 1/10 Duty Cycle, 0.1ms Pulse Width.
2. 2mm below package base.
3. 5mm below package base.



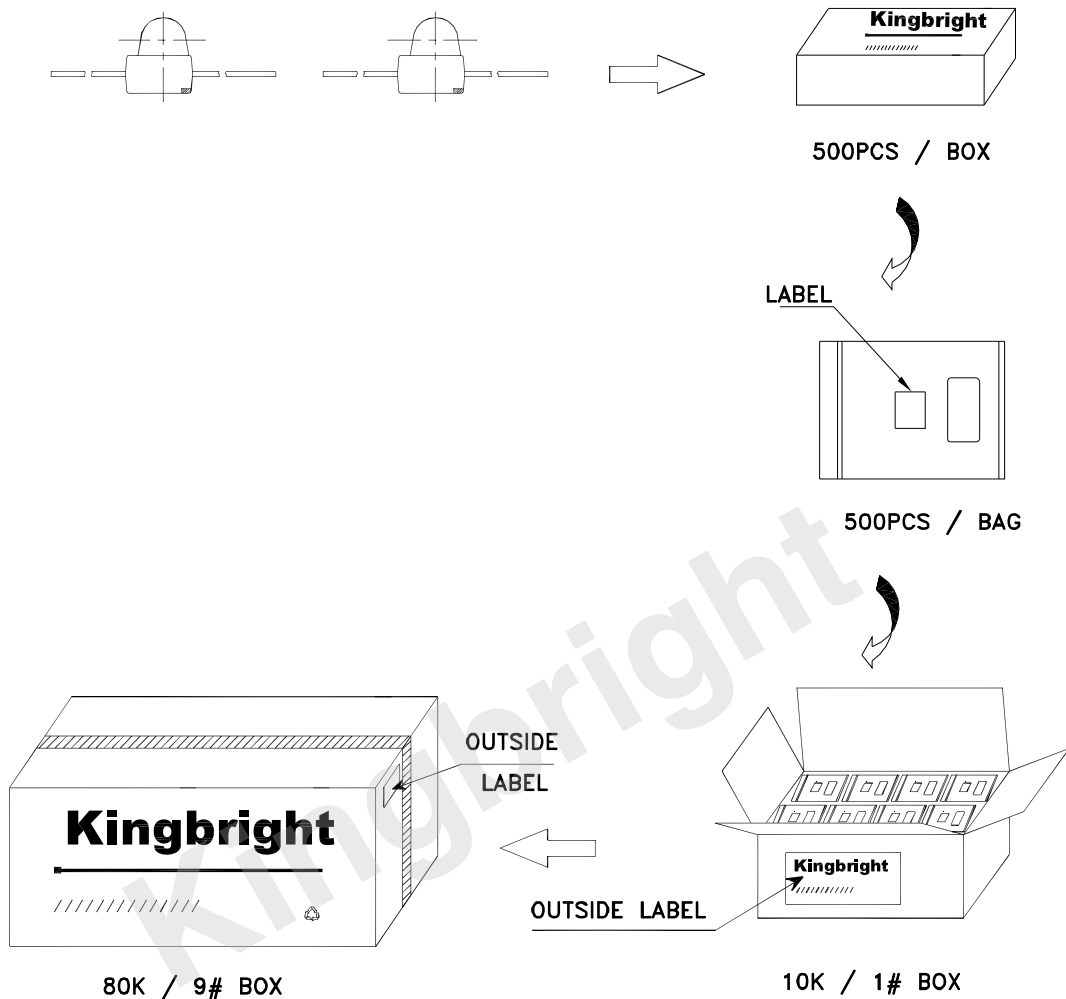
High Efficiency Red

KM2520EC01



PACKING & LABEL SPECIFICATIONS

KM2520EC01



| | |
|--------------------|-----------------------------|
| Kingbright | |
| P/NO: KM2520xxx01 | |
| QTY: 500 pcs | Q.C. |
| S/N: XXXX | Q C XX XX XXXX PASSED |
| CODE: XXX | |
| LOT NO: | |
| XXXXXXXXXXXXXXXXXX | |
| RoHS Compliant | |

Detailed application notes are listed on our website.

http://www.kingbright.com/application_notes