

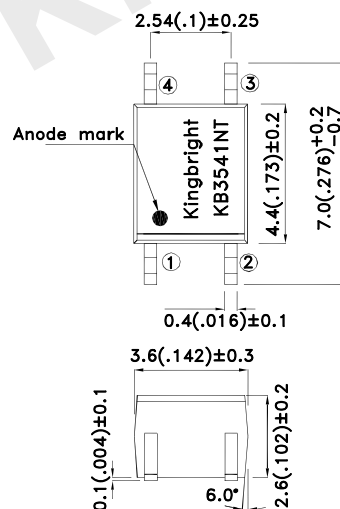
Features

- 1.AC inputs
- 2.High current transfer ratio
- 3.Opaque type, mini-flat package
- 4.Subminiature type (The volume is smaller than that of our conventional DIP type by as far as 30%)
- 5.Isolation voltage between input and output Viso:3750Vrms
- 6.Employs double transfer mold technology
- 7.Recognized by UL and CUL, file NO.E225308.
- 8.Approved by VDE 0884 Teil2(NO:40017614).
- 9.Moisture Sensitivity Level : Level 4.
- 10.Package:1000Pcs/Reel.
- 11.RoHS Compliant.

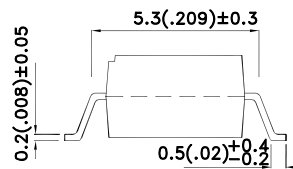
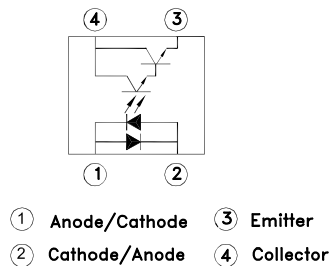
Applications

- 1.Hybrid substrates that require high density mounting
- 2.Programmable controllers

*PACKAGE DIMENSIONS (UNIT:mm) SMD Type



Internal connection diagram



UNIT : MM[INCH]
TOLERANCE : ±0.5[±0.02] UNLESS OTHERWISE NOTED.



***Absolute Maximum Ratings (Ta=25°C)**

Parameter		Symbol	Rating	Unit
Input	Forward current	I _F	±50	mA
	Power dissipation	P	70	mW
Output	Collector-emitter voltage	V _{CEO}	35	V
	Emitter-collector voltage	V _{ECO}	6	V
	Collector current	I _C	80	mA
	Collector power dissipation	P _C	150	mW
Total power dissipation		P _{tot}	170	mW
*1 Isolation voltage		V _{iso}	3750	V _{rms}
Operating temperature		T _{opr}	-30 to +100	°C
Storage temperature		T _{stg}	-40 to +125	°C
*2 Soldering temperature		T _{sol}	260	°C

*1 40 to 60%RH, AC for 1 minute.

*2 For 10 seconds.

***Electro-optical Characteristics**

Parameter			Symbol	Conditions	Min.	Typ.	Max.	Unit
Input	Forward voltage		V _F	I _F =± 20mA	-	1.2	1.4	V
	Peak forward voltage		V _{FM}	I _{FM} =0.5A	-	-	3.0	V
Output	Collector dark current		I _{CEO}	V _{ce} =10V I _F =0	-	-	10 ⁻⁶	A
	Collector-emitter breakdown voltage		BV _{CEO}	I _C =0.1mA I _F =0	35	-	-	V
	Emitter-collector breakdown voltage		BV _{ECO}	I _E =10uA I _F =0	6	-	-	V
Transfer characteristics	Current transfer ration		CTR	I _F =± 1mA V _{ce} =2V	450	1600	7400	%
	Collector-emitter saturation voltage		V _{CE (sat)}	I _F =± 20mA I _C =1mA	-	0.8	1.0	V
	Response time	Rise time	t _r	V _{ce} =2V I _C =2mA R _L =100Ω	-	60	300	uS
		Fall time	t _f		-	53	250	uS

Fig. 1 Current Transfer Ratio vs. Forward Current

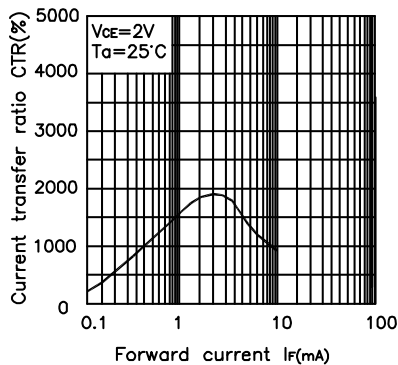


Fig. 2 Forward Current vs. Forward voltage

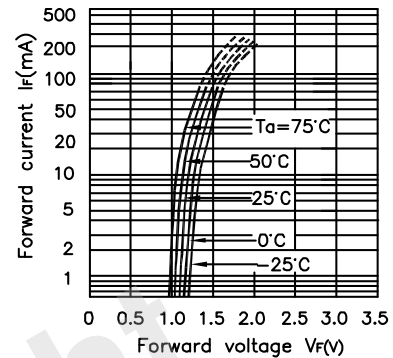


Fig. 3 Collector Current vs. Collector-emitter Voltage

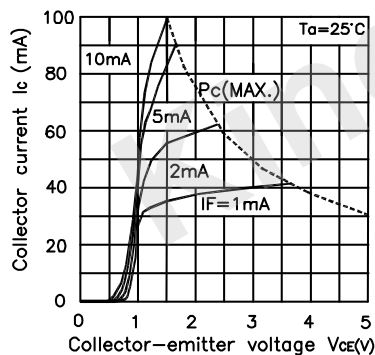


Fig. 4 Relative Current Transfer Ratio vs. Ambient Temperature

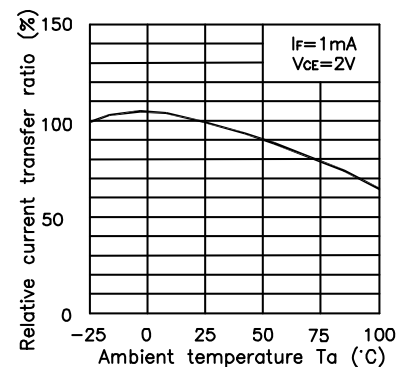


Fig. 5 Collector-emitter Saturation Voltage vs. Ambient Temperature

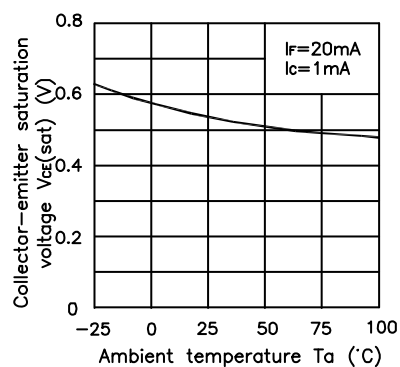
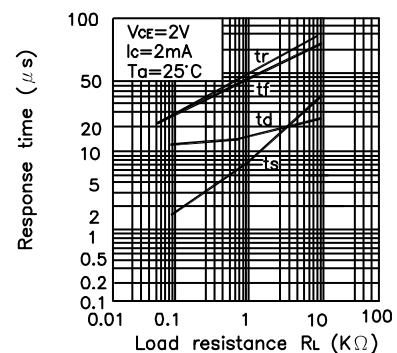


Fig. 6 Response Time vs. Load Resistance



Part Number: KB3541NT

Fig. 7 Collector-emitter Saturation Voltage vs. Forward Current

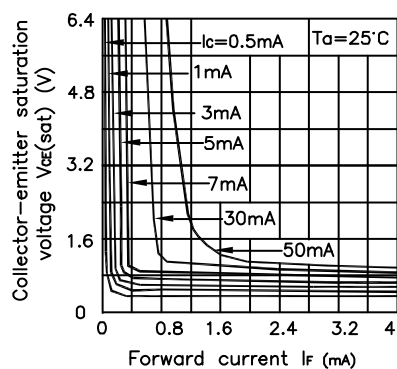
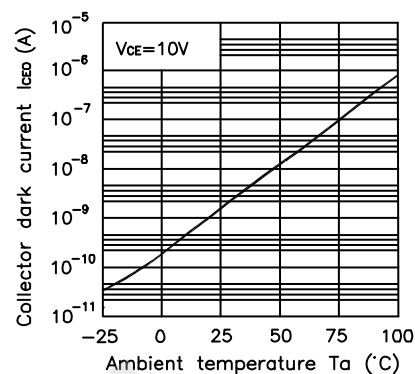
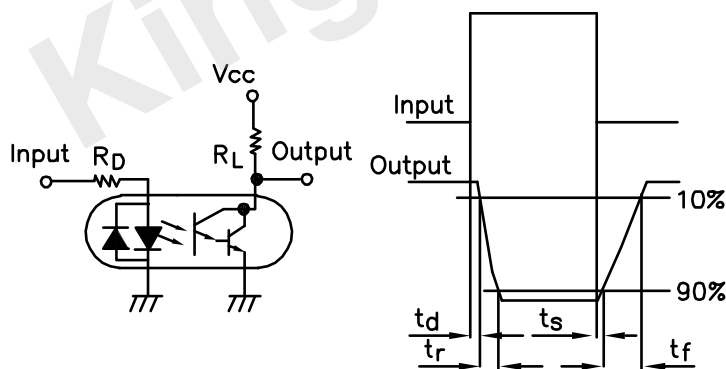


Fig. 8 Collector Dark Current vs. Ambient Temperature



Test Circuit for Response Time

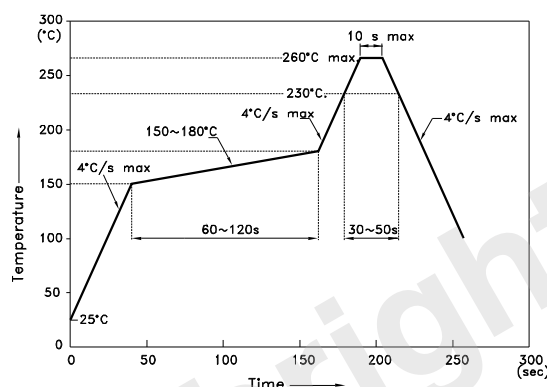


*NOTES ON HANDLING

1.Cautions regarding noise

Be aware that power is suddenly into the componment any surge current may cause damage happen, even if the voltage is within the absolute maximum ratings.

Reflow Soldering Profile For Lead-free SMT Process.



NOTES:

1. We recommend the reflow temperature 245°C(+/-5°C). The maximum soldering temperature should be limited to 260°C.
2. Don't cause stress to the epoxy resin while it is exposed to high temperature.
3. Number of reflow process shall be 2 times or less.

CAUTION

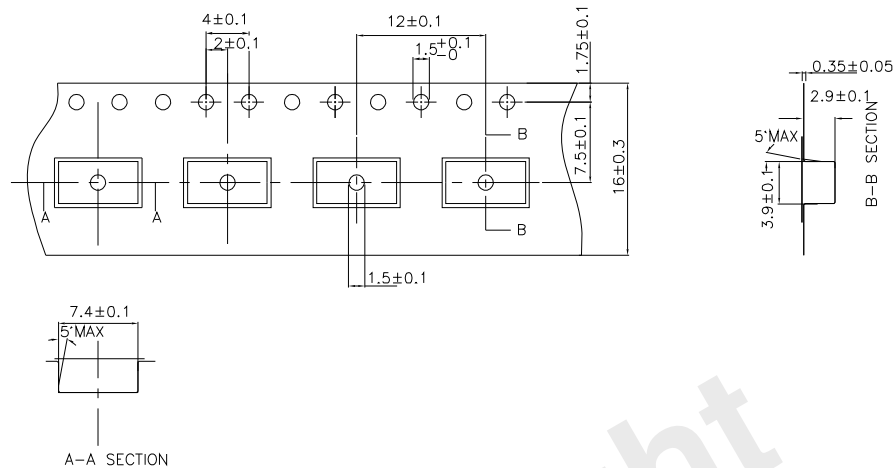
Within this device there exists GaAs (Gallium Arsenide) material which is a harmful substance if ingested. GaAs dust and fumes are toxic. Do not break, cut or pulverize the product, or use chemicals to dissolve them.

RESTRICTIONS ON PRODUCT USE

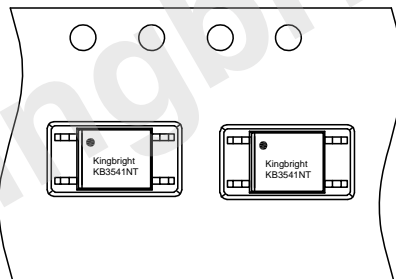
- The information in this document is subject to change without notice. Before using this document, please confirm that this is the latest version. Not all devices / types available in every country.
- We are mention about our product quality stablity, semiconductor devices in general can malfunction or fail due to their inherent electrical sensitivity and vulnerability to physical stress. It is the responsibility of the buyer, when utilizing KINGBRIGHT products, to observe standards of safety, and to a avoid situations in which a malfunction or failure of a KINGBRIGHT product could cause loss of human life, bodily injury or damage to property. In developing your designs, please ensure that KINGBRIGHT products are used within specified operating ranges as set forth in the most recent products specifications.

Part Number: KB3541NT

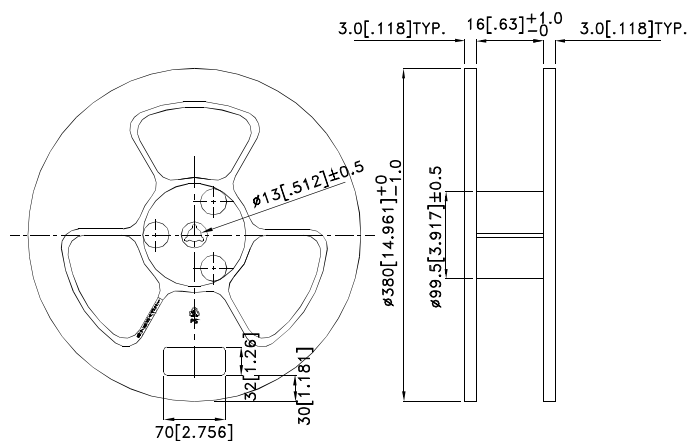
Outline and Dimension (Tape) (Units : mm)



Tape Direction

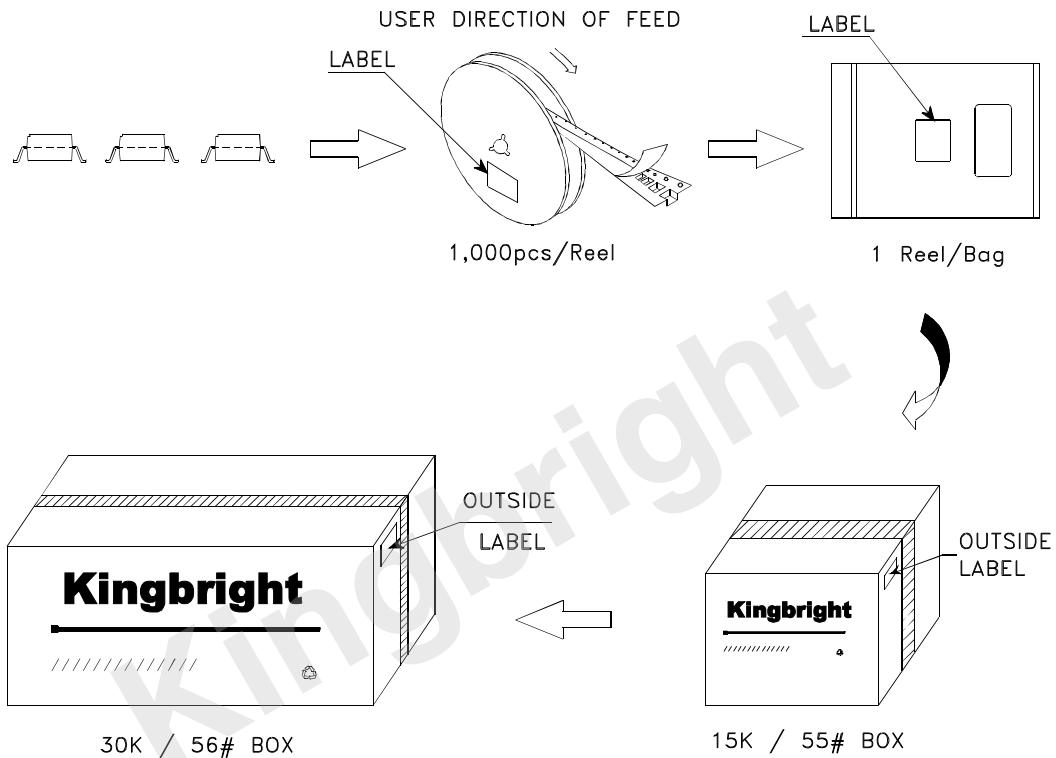


Outline and Dimension (Reel)



Packing: 1000pcs/reel

Part Number: KB3541NT



Kingbright

P/NO: KB3541xxx

QTY: 1000 pcs

Q.C.

S/N: XXXX

CODE: XXX

LOT NO:



xxxxxxxxxxxxxxxxxxxxxxxx

RoHS Compliant

