

Part Number: KB816

GENERAL PURPOSE  
HIGH ISOLATION VOLTAGE  
SINGLE TRANSISTOR TYPE  
HIGH COLLECTOR VOLTAGE  
PHOTOCOUPLER SERIES

### FEATURES

- 1.High isolation voltage between input and output ( $V_{iso}=5000\text{ Vrms}$ ).
- 2.High Collector-emitter voltage ( $V_{ceo}=70\text{V}$ ).
- 3.Compact dual-in-line package  
KB816:1-channel type
- 4.Recognized by UL and CUL, file NO.E225308.
- 5.Approved by VDE 0884 Teil2(NO:40006364).
- 6.RoHS compliant.

### DESCRIPTION

- 1.The KB816 (1-channel) is optically coupled isolators containing a GaAS light emitting diode and an NPN silicon phototransistor.
- 2.The lead pitch is 2.54mm.
- 3.Solid insulation thickness between emitting diode and output phototransistor: $\geq 0.6\text{mm}$ .

### APPLICATIONS

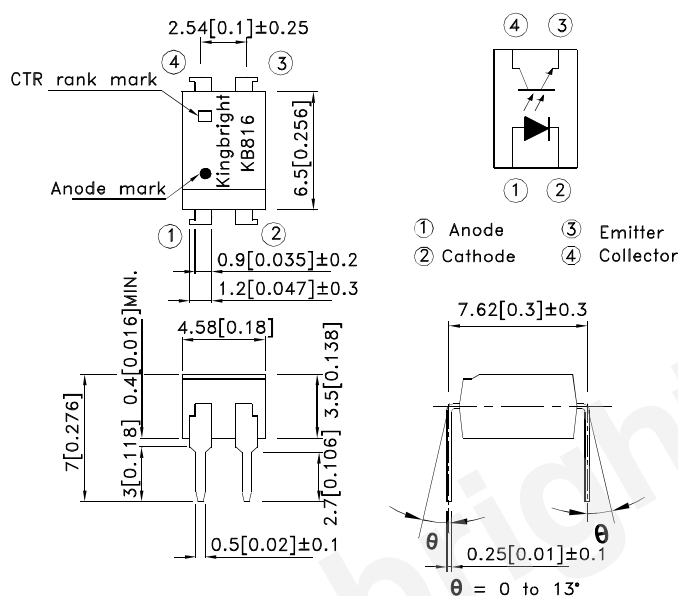
- 1.Computer terminals.
- 2.Registers,copiers,automatic vending machines.
- 3.System appliances, measuring instruments.
- 4.Programmable logic controller.
- 5.Signal transmission between circuits of different potentials and impedances.



Part Number: KB816

### \*PACKAGE DIMENSIONS (UNIT:mm)

TOLERANCE :  $\pm 0.5[\pm 0.02]$  UNLESS OTHERWISE NOTED.



### \*Absolute Maximum Ratings (Ta=25°C)

Parameter		Symbol	Rating	Unit
Input	Forward current	$I_F$	50	mA
	Reverse voltage	$V_R$	6	V
	Power dissipation	P	70	mW
Output	Collector-emitter voltage	$V_{CEO}$	70	V
	Emitter-collector voltage	$V_{ECO}$	6	V
	Collector current	$I_C$	50	mA
	Collector power dissipation	$P_C$	150	mW
Total power dissipation		$P_{tot}$	200	mW
*1 Isolation voltage		Viso	5000	Vrms
Operating temperature		Topr	-30~+100	°C
Storage temperature		Tstg	-55~+125	°C
*2 Soldering temperature		Tsol	260	°C

\*1 40 to 60% RH, AC for 1 minute.

\*2 For 10 seconds.

\*3 Relative humidity levels maintained between 40% and 60% in production area are recommended to avoid the build-up of static electricity – Ref JEDEC/JESD625-A and JEDEC/J-STD-033.

#### \*Electro-optical Characteristics (Ta=25°C)

Parameter			Symbol	Conditions	Min.	Typ.	Max.	Unit
Input	Forward voltage		V <sub>F</sub>	I <sub>F</sub> =20mA	—	1.2	1.4	V
	Peak forward voltage		V <sub>FM</sub>	I <sub>FM</sub> =0.5A	—	—	3.0	V
	Reverse current		I <sub>R</sub>	V <sub>R</sub> =4V	—	—	10	μA
Output	Collector dark current		I <sub>CEO</sub>	V <sub>CE</sub> =20V, I <sub>F</sub> =0mA	—	—	10 <sup>-7</sup>	A
Transfer character- istics	*1Current transfer ratio		CTR	I <sub>F</sub> =5mA, V <sub>CE</sub> =5V	50	—	600	%
	Collector-emitter saturation voltage		V <sub>CE(sat)</sub>	I <sub>F</sub> =20mA, I <sub>C</sub> =1mA	—	0.1	0.2	V
	Cut-off frequency		f <sub>c</sub>	V <sub>CE</sub> =5V, I <sub>C</sub> =2mA R <sub>L</sub> =100Ω, -3dB	—	80	—	KHz
	Response time	Rise time	t <sub>r</sub>	V <sub>CE</sub> =2V, I <sub>C</sub> =2mA R <sub>L</sub> =100Ω	—	4	18	μs
		Fall time	t <sub>f</sub>		—	3	18	μs

\*1 Classification table of current transfer ratio is shown below.

$$CTR = \frac{I_C}{I_F} \times 100\%$$

Model NO.	Rank mark	CTR(%)
KB816L	L	50 to 100
KB816A	A	80 to 160
KB816B	B	130 to 260
KB816C	C	200 to 400
KB816D	D	300 to 600
KB816AB	A or B	80 to 260
KB816BC	B or C	130 to 400
KB816CD	C or D	200 to 600
KB816AC	A,B or C	80 to 400
KB816BD	B,C or D	130 to 600
KB816AD	A,B,C or D	80 to 600
KB816	L,A,B,C,D or No mark	50 to 600

Fig. 1 Current Transfer Ratio vs. Forward Current

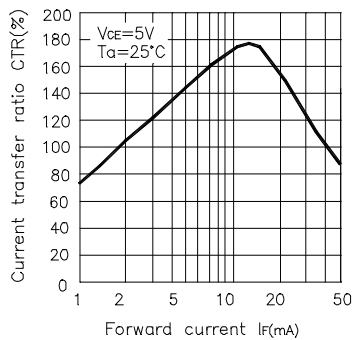


Fig. 2 Forward Current vs. Forward voltage

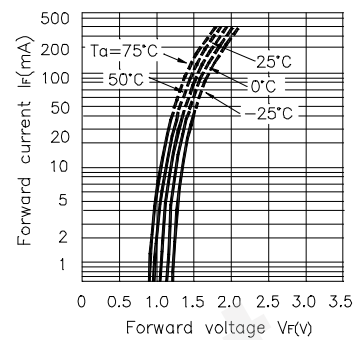


Fig. 3 Collector Current vs. Collector-emitter Voltage

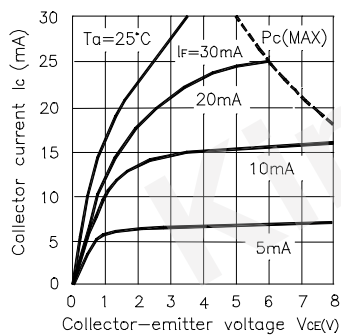


Fig. 4 Relative Current Transfer Ratio vs. Ambient Temperature

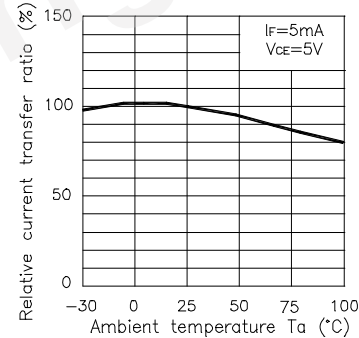


Fig. 5 Collector-emitter Saturation Voltage vs. Ambient Temperature

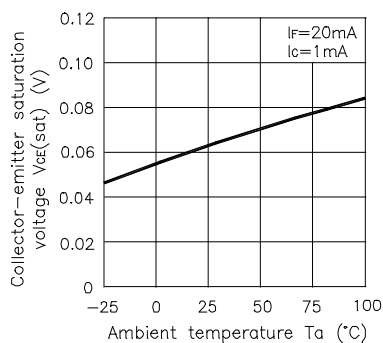
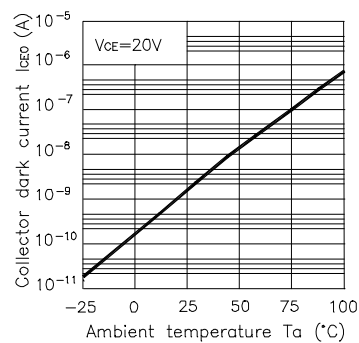
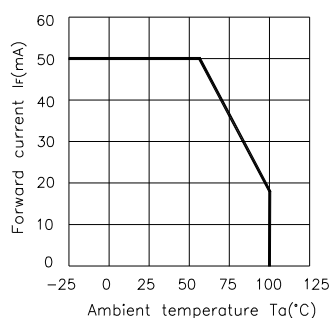


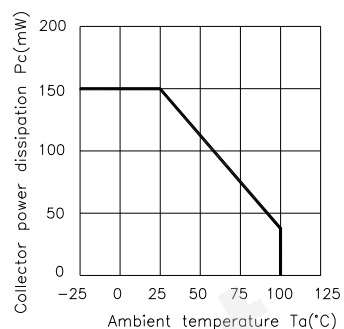
Fig. 6 Collector Dark Current vs. Ambient Temperature



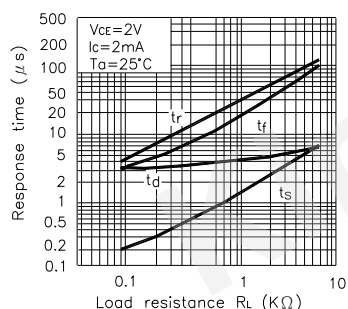
**Fig. 7 Forward Current vs. Ambient Temperature**



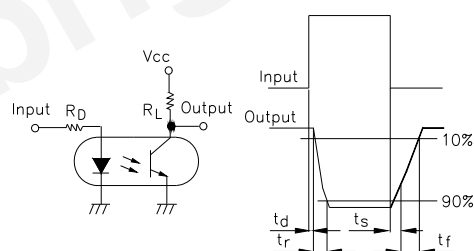
**Fig. 8 Collector Power Dissipation vs. Ambient Temperature**



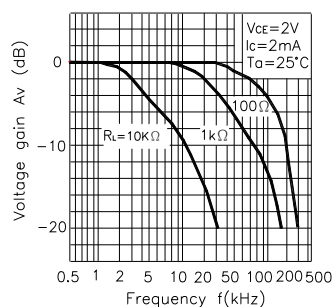
**Fig. 9 Response Time vs. Load Resistance**



**Test Circuit for Response Time**



**Fig. 10 Frequency Response**



**Test Circuit for Frequency Response**

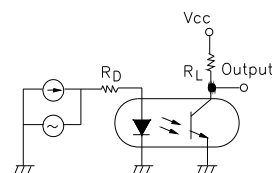
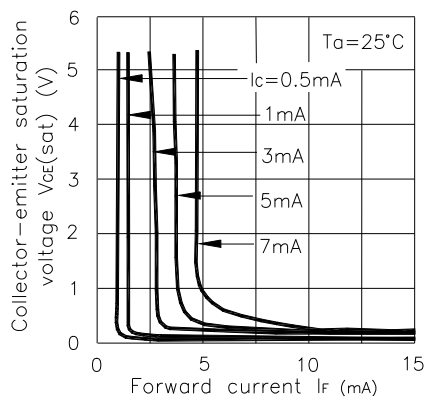


Fig. 11 Collector-emitter Saturation Voltage vs. Forward Current



### \*NOTES ON HANDLING

#### 1.Recommended soldering conditions (Dip soldering)

##### (1) Dip soldering

Temperature	260 °C or below (molten solder temperature)
Time	Less than 10 seconds.
Cycle	One cycle allowed to be dipped in solder including plastic mold portion.
Flux	Rosin flux containing small amount of chorine (The flux with a maximum chlorine content of 0.2 Wt % is recommended.)

##### (2) Cautions

###### Fluxes

Avovid removing the residual flux with freon-based and chlorine-based cleaning solvent.

#### 2.Cautions regarding noise

Be aware that power is suddenly into the componment any surge current may cause damage happen, even if the voltage is within the absolute maximum ratings.

#### CAUTION

Within this device there exists GaAs (Gallium Arsenide) material which is a harmful substance if ingested. GaAs dust and fumes are toxic. Do not break, cut or pulverize the product, or use chemicals to dissolve them.

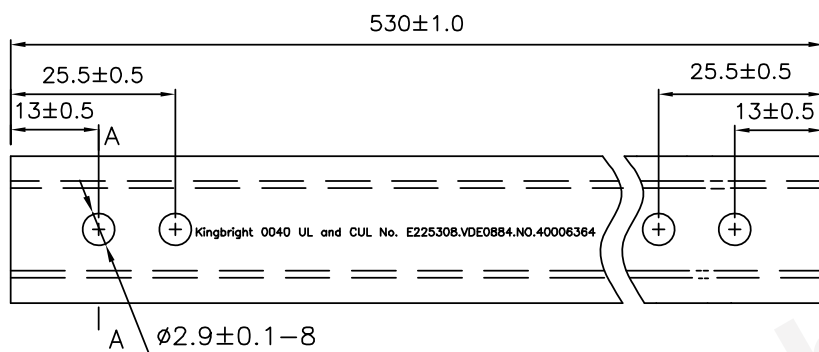
#### RESTRICTIONS ON PRODUCT USE

- The information in this document is subject to change without notice. Before using this document, please confirm that this is the latest version. Not all devices / types available in every country.
- We are mention about our product quality stability, semiconductor devices in general can malfunction or fail due to their inherent electrical sensitivity and vulnerability to physical stress. It is the responsibility of the buyer, when utilizing KINGBRIGHT products, to observe standards of safety, and to avoid situations in which a malfunction or failure of a KINGBRIGHT product could cause loss of human life, bodily injury or damage to property. In developing your designs, please ensure that KINGBRIGHT products are used within specified operating ranges as set forth in the most recent products specifications.

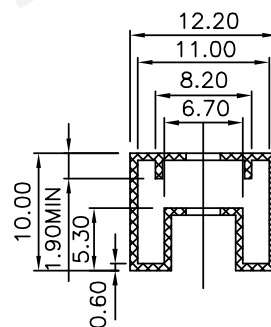
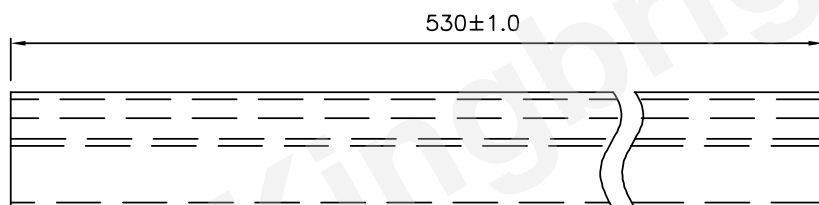
Part Number: KB816

### Dimension of Tube

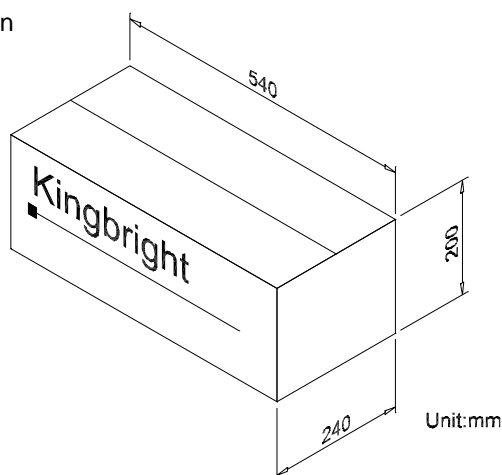
TOLERANCE :  $\pm 0.4[\pm 0.012]$  UNLESS OTHERWISE NOTED.  
Unit:mm



A-A Side view



### Dimension of Carton

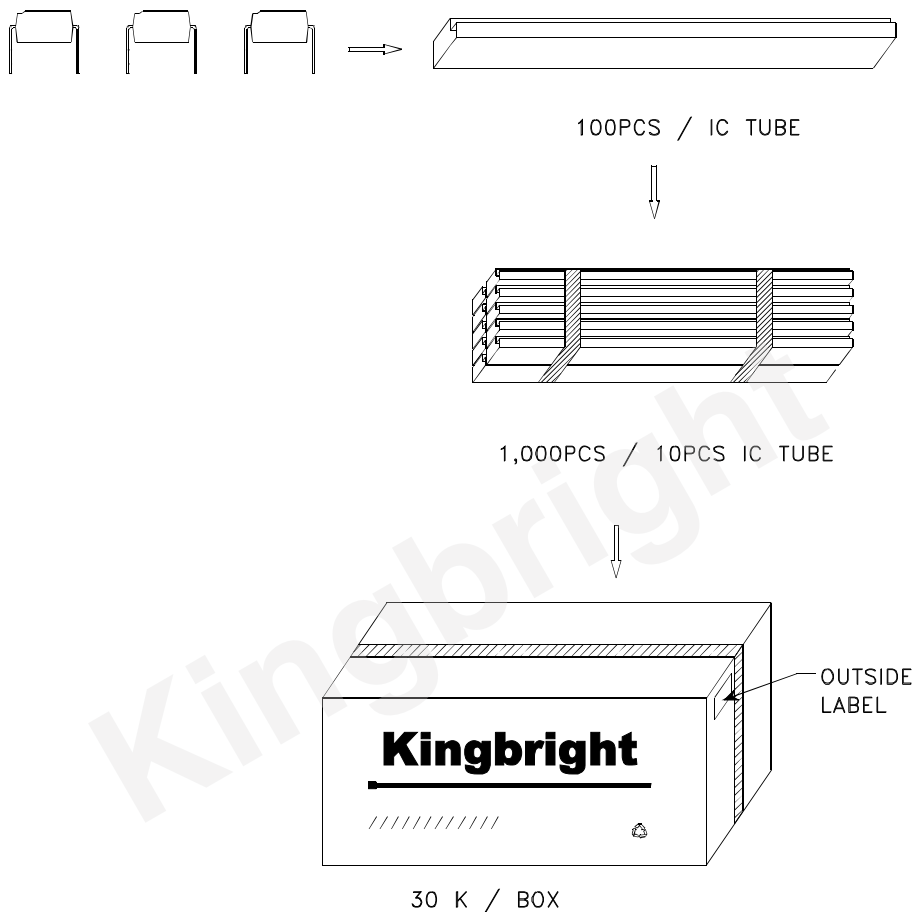



Part Number	Package	Package Style
KB816	4-pin DIP	100pcs/each tube



Part Number: KB816

### PACKING & LABEL SPECIFICATIONS



<b>Kingbright</b>	
P/NO: KB816	
QTY: 100 pcs	Q.C. <span style="border: 1px solid black; border-radius: 50%; padding: 2px;">Q C XX-XX-XXXX PASSED</span>
S/N: XXXX	
CODE: XXX	
LOT NO:	
 XXXXXXXXXXXXXXXXXXXX	
RoHS Compliant	