



ATTENTION
OBSERVE PRECAUTIONS
FOR HANDLING
ELECTROSTATIC
DISCHARGE
SENSITIVE
DEVICES

Part Number: KA-3529AZG25Z4S

Green

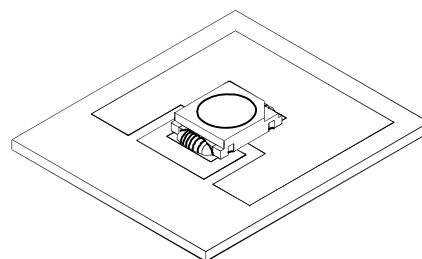
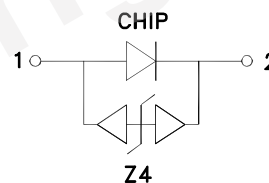
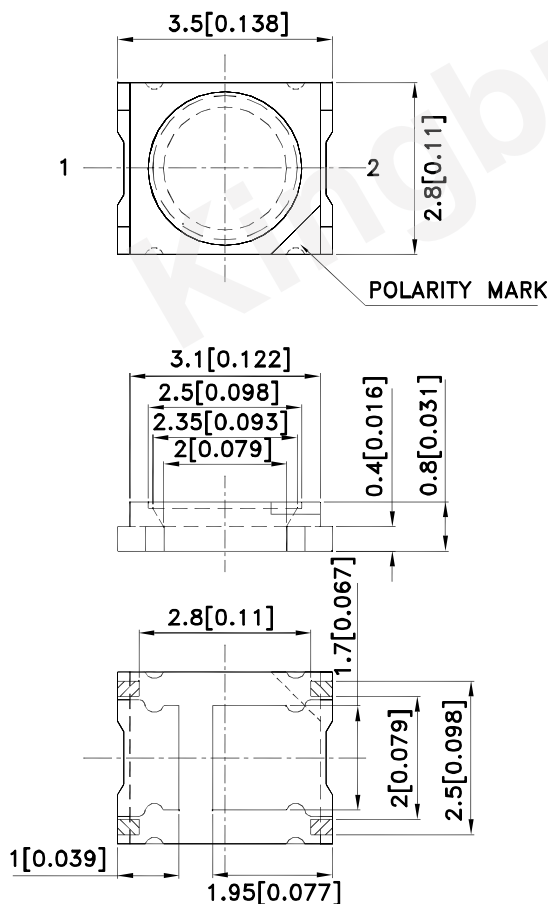
Features

- Single color.
- Suitable for all SMD assembly and solder process.
- Available on tape and reel.
- White SMD package, silicone resin.
- Low thermal resistance.
- Package: 2000pcs / reel.
- Moisture sensitivity level : level 2a.
- RoHS compliant.

Descriptions

- The Green source color devices are made with InGaN on Al_2O_3 substrate Light Emitting Diode.
- Electrostatic discharge and power surge could damage the LEDs.
- It is recommended to use a wrist band or anti-electrostatic glove when handling the LEDs.
- All devices, equipments and machineries must be electrically grounded.

Package Dimensions



Notes:

1. All dimensions are in millimeters (inches).
2. Tolerance is $\pm 0.25(0.01")$ unless otherwise noted.
3. The specifications, characteristics and technical data described in the datasheet are subject to change without prior notice.
4. The device has a single mounting surface. The device must be mounted according to the specifications.

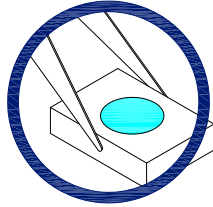


Handling Precautions

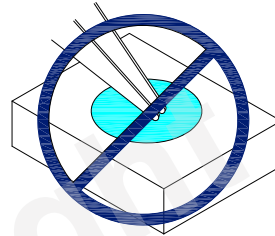
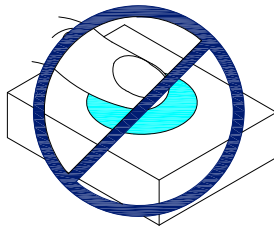
Compare to epoxy encapsulant that is hard and brittle, silicone is softer and flexible. Although its characteristic significantly reduces thermal stress, it is more susceptible to damage by external mechanical force.

As a result, special handling precautions need to be observed during assembly using silicone encapsulated LED products. Failure to comply might lead to damage and premature failure of the LED.

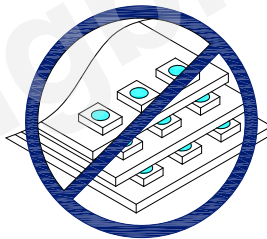
1. Handle the component along the side surfaces by using forceps or appropriate tools.



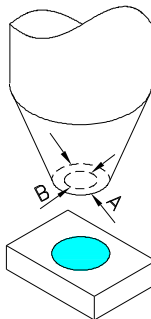
2. Do not directly touch or handle the silicone lens surface. It may damage the internal circuitry.



3. Do not stack together assembled PCBs containing exposed LEDs. Impact may scratch the silicone lens or damage the internal circuitry.



- 4.1. The inner diameter of the SMD pickup nozzle should not exceed the size of the LED to prevent air leaks.
- 4.2. A pliable material is suggested for the nozzle tip to avoid scratching or damaging the LED surface during pickup.
- 4.3. The dimensions of the component must be accurately programmed in the pick-and-place machine to insure precise pickup and avoid damage during production.



5. As silicone encapsulation is permeable to gases, some corrosive substances such as H_2S might corrode silver plating of leadframe. Special care should be taken if an LED with silicone encapsulation is to be used near such substances.

Selection Guide

| Part No. | Emitting Color (Material) | Lens Type | Iv (cd) [2] @ 150mA | | Φv (lm) [2] @ 150mA* | | Viewing Angle [1] |
|-----------------|------------------------------|-------------|------------------------|------|-------------------------|------|----------------------|
| | | | Min. | Typ. | Min. | Typ. | 2 θ 1/2 |
| KA-3529AZG25Z4S | Green (InGaN) | Water Clear | 5 | 7 | 17 | 20 | 120 ° |

Notes:

1. θ1/2 is the angle from optical centerline where the luminous intensity is 1/2 of the optical peak value.
2. Luminous intensity/ luminous Flux: +/-15%. *LEDs are binned according to their luminous flux.
3. Luminous intensity/ Luminous flux value is traceable to CIE127-2007 standards.

Absolute Maximum Ratings at TA=25°C

| Parameter | Symbol | Value | Unit |
|---|---------|------------|------|
| Power Dissipation | PD | 600 | mW |
| Junction Temperature [1] | TJ | 110 | °C |
| Operating Temperature | Top | -40 To +85 | °C |
| Storage Temperature | Tstg | -40 To +85 | °C |
| DC Forward Current [1] | IF | 150 | mA |
| Reverse Voltage | VR | 5 | V |
| Peak Forward Current [2] | IFM | 300 | mA |
| Thermal Resistance [1] (Junction/ambient) | Rth j-a | 170 | °C/W |
| Thermal Resistance [1] (Junction/solder point) | Rth j-S | 50 | °C/W |
| Electrostatic Discharge Threshold (HBM) | | 8000 | V |

Notes:

1. Results from mounting on PC board FR4 (pad size $\geq 70\text{mm}^2$), mounted on pc board-metal core PCB is recommend for lowest thermal Resistance.
2. 1/10 Duty Cycle, 0.1ms Pulse Width.
3. Relative humidity levels maintained between 40% and 60% in production area are recommended to avoid the build-up of static electricity – Ref JEDEC/JESD625-A and JEDEC/J-STD-033.

Electrical / Optical Characteristics at TA=25°C

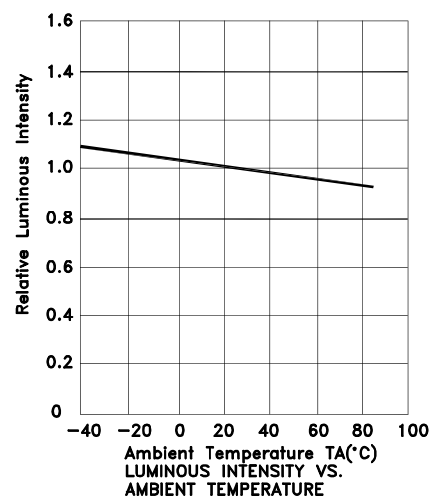
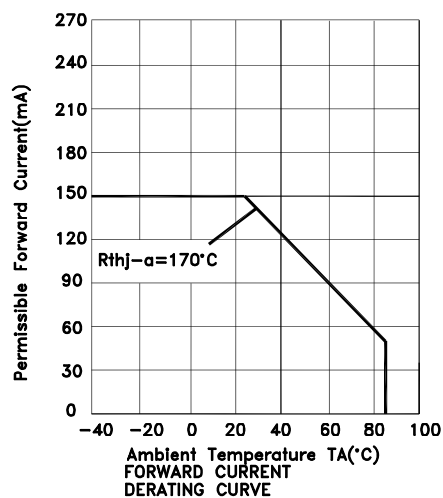
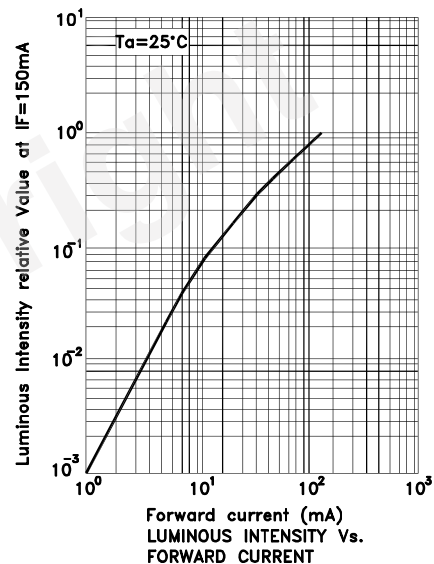
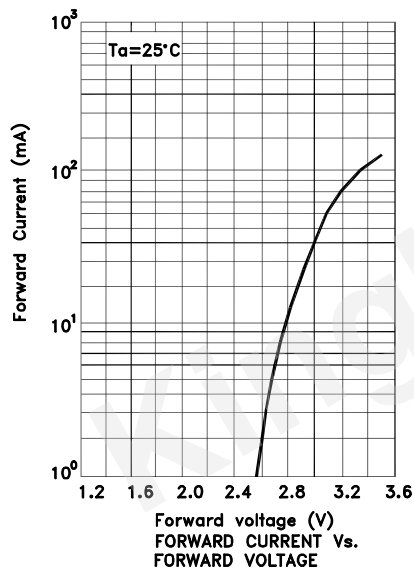
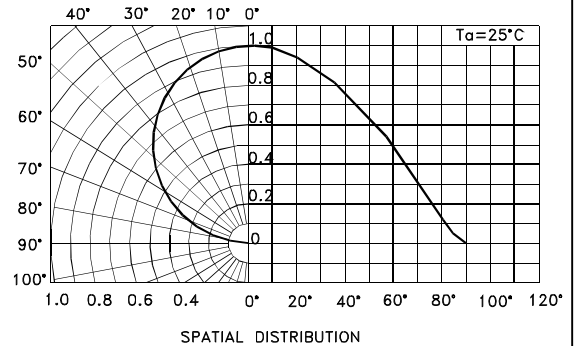
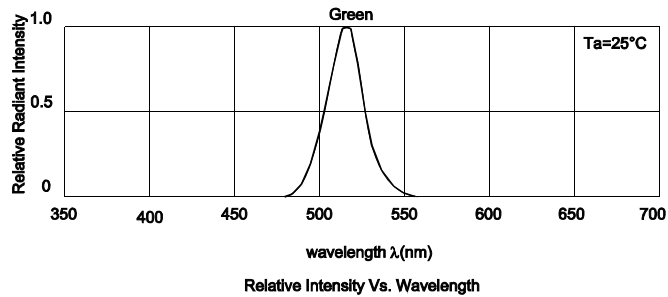
| Parameter | Symbol | Value | Unit |
|--|----------------------------|-------|--------|
| Wavelength at peak emission IF=150mA [Typ.] | λ_{peak} | 515 | nm |
| Dominant Wavelength IF=150mA [Typ.] | λ_{dom} [1] | 525 | nm |
| Spectral Line Half-width IF=150mA [Typ.] | $\Delta\lambda$ | 30 | nm |
| Allowable Reverse Current [Max.] | IR | 85 | mA |
| Forward Voltage IF=150mA [Min.] | VF [2] | 2.9 | V |
| Forward Voltage IF=150mA [Typ.] | | 3.5 | |
| Forward Voltage IF=150mA [Max.] | | 4.0 | |
| Temperature coefficient of λ_{peak} IF=150mA, -10 ° C \leq T \leq 100 ° C [Typ.] | TC λ_{peak} | 0.13 | nm/° C |
| Temperature coefficient of λ_{dom} IF=150mA, -10 ° C \leq T \leq 100 ° C [Typ.] | TC λ_{dom} | 0.1 | nm/° C |
| Temperature coefficient of VF IF=150mA, -10 ° C \leq T \leq 100 ° C [Typ.] | TCV | -3.1 | mV/° C |

Notes:

1. Wavelength: +/-1nm.
2. Forward Voltage: +/-0.1V.
3. Wavelength value is traceable to CIE127-2007 standards.
4. Excess driving current and/or operating temperature higher than recommended conditions may result in severe light degradation or premature failure.

Green

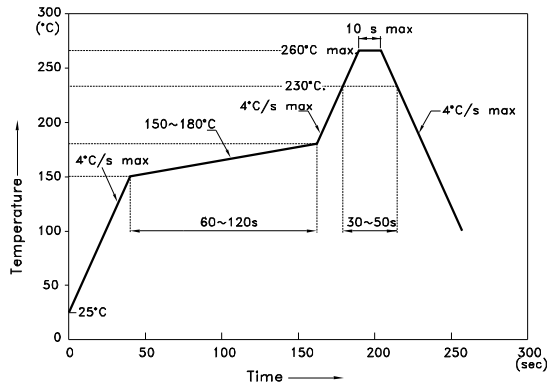
KA-3529AZG25Z4S



KA-3529AZG25Z4S

Reflow soldering is recommended and the soldering profile is shown below.
Other soldering methods are not recommended as they might cause damage to the product.

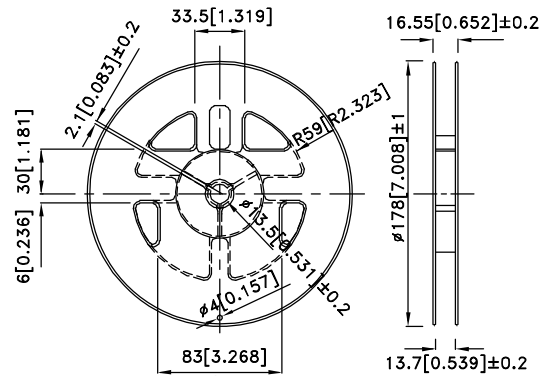
Reflow Soldering Profile For Lead-free SMT Process.



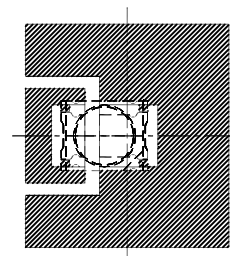
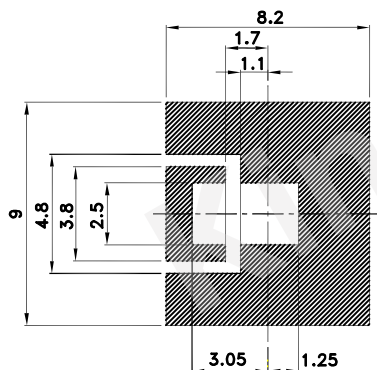
NOTES:

1. We recommend the reflow temperature $245^{\circ}\text{C} (+/-5^{\circ}\text{C})$. The maximum soldering temperature should be limited to 260°C .
2. Don't cause stress to the epoxy resin while it is exposed to high temperature.
3. Number of reflow process shall be 2 times or less.

Reel Dimension

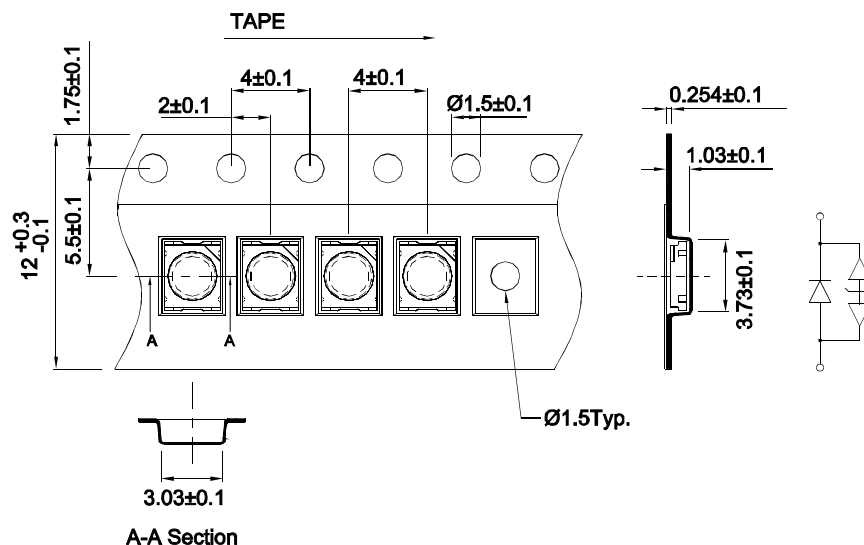


Recommended Soldering Pattern (Units : mm; Tolerance: ± 0.1)



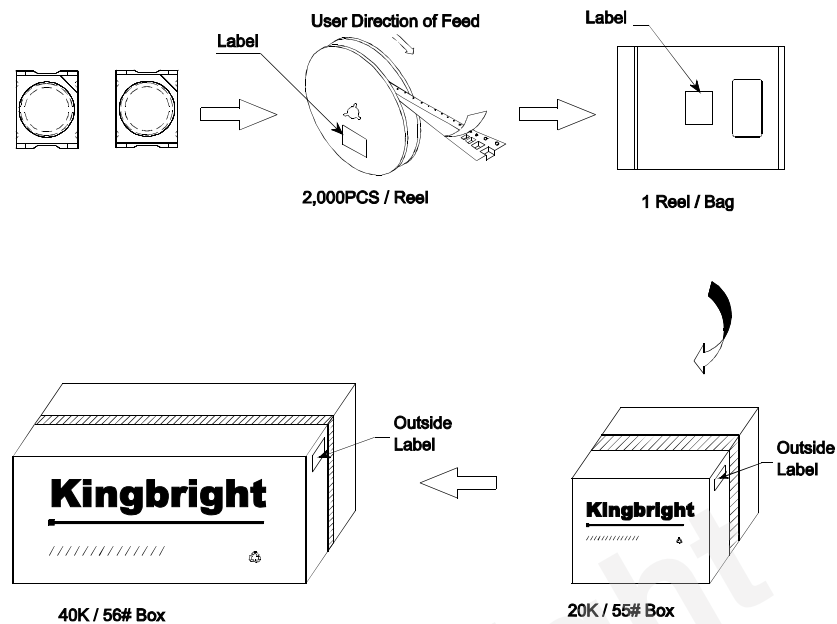
 Solder resist

Tape Specifications (Units : mm)



PACKING & LABEL SPECIFICATIONS

KA-3529AZG25Z4S



| | | |
|-------------------|------|----------------------|
| Kingbright | | |
| P/NO: KA-3529AXXX | | |
| QTY: 2,000 PCS | Q.C. | Q.C. |
| S/N: XXXX | | XX-XX-XXXX PASSED |
| CODE: XXX | | |
| LOT NO: | | |
| | | |
| RoHS Compliant | | |

Terms and conditions for the usage of this document

1. The information included in this document reflects representative usage scenarios and is intended for technical reference only.
2. The part number, type, and specifications mentioned in this document are subject to future change and improvement without notice. Before production usage customer should refer to the latest datasheet for the updated specifications.
3. When using the products referenced in this document, please make sure the product is being operated within the environmental and electrical limits specified in the datasheet. If customer usage exceeds the specified limits, Kingbright will not be responsible for any subsequent issues.
4. The information in this document applies to typical usage in consumer electronics applications. If customer's application has special reliability requirements or have life-threatening liabilities, such as automotive or medical usage, please consult with Kingbright representative for further assistance.
5. The contents and information of this document may not be reproduced or re-transmitted without permission by Kingbright.
6. All design applications should refer to Kingbright application notes available at http://www.kingbright.com/application_notes